



GMT MONTHLY MEMBERSHIP PROGRESS REPORT

Results as of: 5/31/2017

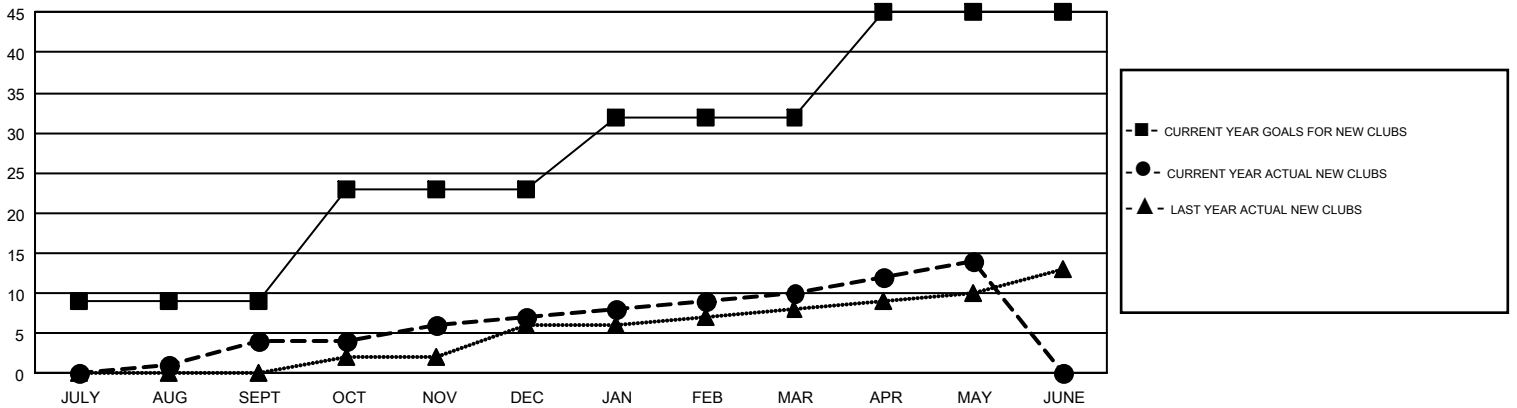
GMT Constitutional Area 1, Group C

GMT: THOMAS MATNEY

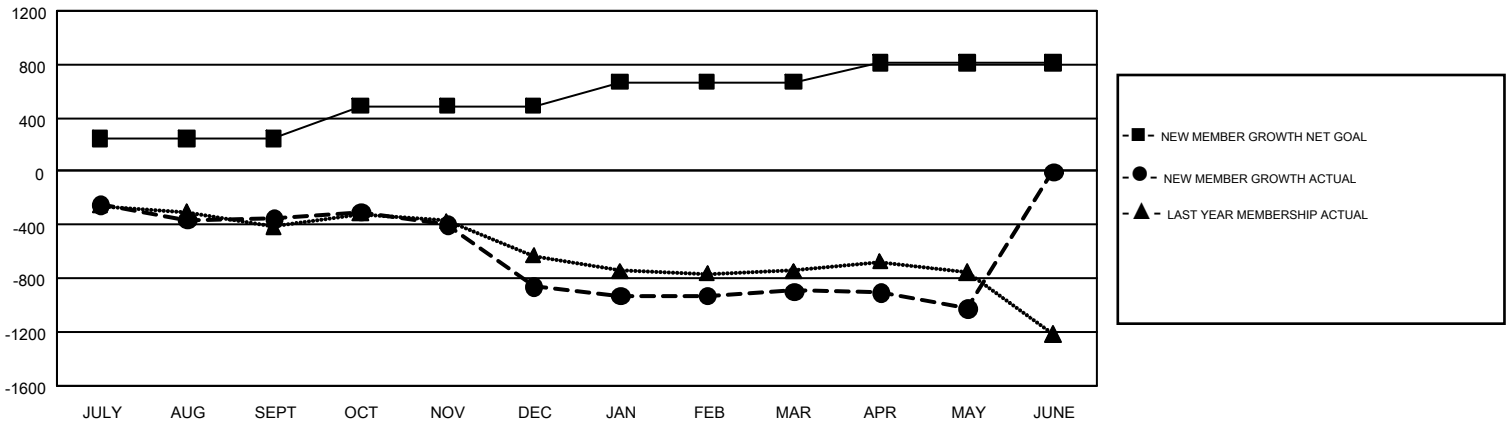
REPORT DOES NOT INCLUDE CLUBS IN UNDISTRICTED AREAS.

Clubs				Members			
RESULTS FOR 2016-2017				RESULTS FOR 2016-2017			
QUARTER	NEW CLUB GOAL	NEW CLUBS	DROPPED CLUBS	QUARTER	NEW MEMBER GROWTH NET GOAL (not reinstated or transfers)	NEW MEMBER GROWTH ACTUAL (not reinstated or transfers)	DROPPED MEMBERS ACTUAL (including transfers)
JULY/AUG/SEPT	9	4	6	JULY/AUG/SEPT	248	895	1,244
OCT/NOV/DEC	14	3	11	OCT/NOV/DEC	241	839	1,350
JAN/FEB/MAR	9	3	4	JAN/FEB/MAR	180	1,016	1,048
APR/MAY/JUNE	13	4	1	APR/MAY/JUNE	142	622	750

GOALS AND ACTUAL NEW CLUBS CUMULATIVE



GOALS AND ACTUAL MEMBERS CUMULATIVE



DROPPED CLUBS: 22	944 CLUBS OF 1,544 ADDED 1 OR MORE NEW MEMBERS	GENDER DISTRIBUTION
DROPPED MEMBERS		MALE 30,598 (73.13%)
DECEASED 642		FEMALE 11,241 (26.87%)
CLUB CANCELLED 143	CLICK HERE FOR CUMULATIVE MEMBERSHIP DATA	TOTAL FAMILY UNIT MEMBERS 7,720
OTHER 3,606		FAMILY MEMBERS PAYING HALF DUES 3,961
TOTAL 4,391		